

RESEARCH

Open Access



Evaluation of the physiological activity of venom from the Eurasian water shrew *Neomys fodiens*

Krzysztof Kowalski^{1*}, Paweł Marciniak², Grzegorz Rosiński² and Leszek Rychlik¹

Abstract

Background: Animal toxins can have medical and therapeutic applications. Principally, toxins produced by insects, arachnids, snakes and frogs have been characterized. Venomous mammals are rare, and their venoms have not been comprehensively investigated. Among shrews, only the venom of *Blarina brevicauda* has been analysed so far, and blarina toxin has been proven to be its main toxic component. It is assumed that *Neomys fodiens* employs its venom to hunt larger prey. However, the toxic profile, properties and mode of action of its venom are largely unknown. Therefore, we analysed the cardio-, myo- and neurotropic properties of *N. fodiens* venom and saliva of non-venomous *Sorex araneus* (control tests) in vitro in physiological bioassays carried out on two model organisms: beetles and frogs. For the first time, we fractionated *N. fodiens* venom and *S. araneus* saliva by performing chromatographic separation. Next, the properties of selected compounds were analysed in cardiotropic bioassays in the *Tenebrio molitor* heart.

Results: The venom of *N. fodiens* caused a high decrease in the conduction velocity of the frog sciatic nerve, as well as a significant decrease in the force of frog calf muscle contraction. We also recorded a significant decrease in the frog heart contractile activity. Most of the selected compounds from *N. fodiens* venom displayed a positive chronotropic effect on the beetle heart. However, one fraction caused a strong decrease in the *T. molitor* heart contractile activity coupled with a reversible cardiac arrest. We did not observe any responses of the insect heart and frog organs to the saliva of *S. araneus*. Preliminary mass spectrometry analysis revealed that calmodulin-like protein, thymosin β -10, hyaluronidase, lysozyme C and phospholipase A2 are present in the venom of *N. fodiens*, whereas thymosin β 4, lysozyme C and β -defensin are present in *S. araneus* saliva.

Conclusion: Our results showed that *N. fodiens* venom has stronger paralytic properties and lower cardioinhibitory activity. Therefore, it is highly probable that *N. fodiens* might use its venom as a prey immobilizing agent. We also confirmed that *S. araneus* is not a venomous mammal because its saliva did not exhibit any toxic effects.

Keywords: Mammalian venom, Natural toxins, *Neomys fodiens*, Toxicity in vitro, Salivary glands, Shrews, *Sorex araneus*

Background

Many animal toxins have been discovered in the last century [1]. Even several species of toxic birds, such as *Pitohui kirhocephalus* or *Ifrita kowaldi*, have been discovered [2]. However, despite the availability of new proteomic, genomic and chromatographic separation techniques, most venomous and poisonous animals remain unstudied [3–5]. Principally, toxins produced by insects, arachnids, snakes and frogs have been

investigated thus far [3, 6]. Venoms produced by mammals remain mostly uncharacterized [3, 5, 6].

Only a few mammalian species, such as the short-tailed shrew, two species of water shrews and two species of solenodons (Soricomorpha), as well as the platypus (Monotremata), are proven to produce venoms [7–9]. Additionally, according to recent research, three species of vampire bats (Chiroptera) and three species of lorises (Primates) are considered venomous as well [5, 9–11]. Only the platypus venom has been comprehensively studied with a focus on its composition, function and evolution [12]. Some studies on toxic components and function of the vampire bat and loris (especially the slow loris) venom

* Correspondence: kowalski.biol@gmail.com

¹Department of Systematic Zoology, Institute of Environmental Biology, Adam Mickiewicz University, Umultowska 89, 61-614 Poznań, Poland
Full list of author information is available at the end of the article



have been performed [10, 11]. Likewise, the biological activities of the venoms produced by few insectivorous mammals (from the order Soricomorpha) have been reported [7–9]. In general, studies on the structure of venomous glands and the toxic activity of solenodon venom are scarce [13, 14]. Among shrews, only the venom from the short-tailed shrew *Blarina brevicauda* has been analysed thus far [8, 15]. The main toxic component of this venom is blarina toxin (BLTX) — a serine protease with tissue kallikrein-like activity [8]. Moreover, blarinasin was purified and characterized in *B. brevicauda* venom [15]. However, despite the chemical similarity to BLTX, this protease is completely devoid of toxic activity. It is particularly surprising that the knowledge on venoms from two species of water shrews, *Neomys fodiens* and *N. anomalus*, quite common in Europe, is extremely poor [7, 9]. The toxic properties of *N. fodiens* and *N. anomalus* venoms from the submandibular salivary glands have been reported a few times in the past [16, 17]. Therefore, it is highly probable that, similar to *B. brevicauda*, the venoms of these two species contain compounds with toxic activity.

In the present paper, we aimed to analyse the profile and toxic activity of the venom from the Eurasian water shrew *N. fodiens*. The paralytic (neuro- and myotoxic) and cardiotoxic properties of the water shrew venom were identified by performing physiological bioassays on two model experimental animals: the mealworm beetle *Tenebrio molitor* and frogs (*Rana temporaria* and *Pelodytes punctatus* sp.). Additionally, control tests with the saliva of a non-venomous species, the common shrew *Sorex araneus*, were carried out.

Results

In vitro effects of the water shrew venom and its fractions on the heart contractile activity

The application of venom extract of the water shrew on the semi-isolated insect heart caused a small decrease in the heart contractile activity ($-3.95\% \pm 1.51$; Figs. 1a and 2a). After the application of *N. fodiens* extract on the frog heart, a small but significant decrease in the heart contractile activity was observed. During the 1st minute after venom application, the frequency of the heartbeat decreased by $1.73\% \pm 0.30$ (Figs. 1b and 3b), whereas during 2nd minute by $1.36\% \pm 0.50$ (Fig. 1b). There was no change in the insect heart activity after the application of saliva extract from the common shrew ($-0.62\% \pm 0.40$; Figs. 1a and 2c). Additionally, after the application of the common shrew saliva on frog heart we did not record any changes in the heart contractile activity (1st minute: $-1.53\% \pm 0.87$; 2nd minute: $0.28\% \pm 0.55$; Figs. 1b and 3d). Moreover, the venom of the water shrew displayed a stronger negative chronotropic effect on the frog heart than *S. araneus* saliva.

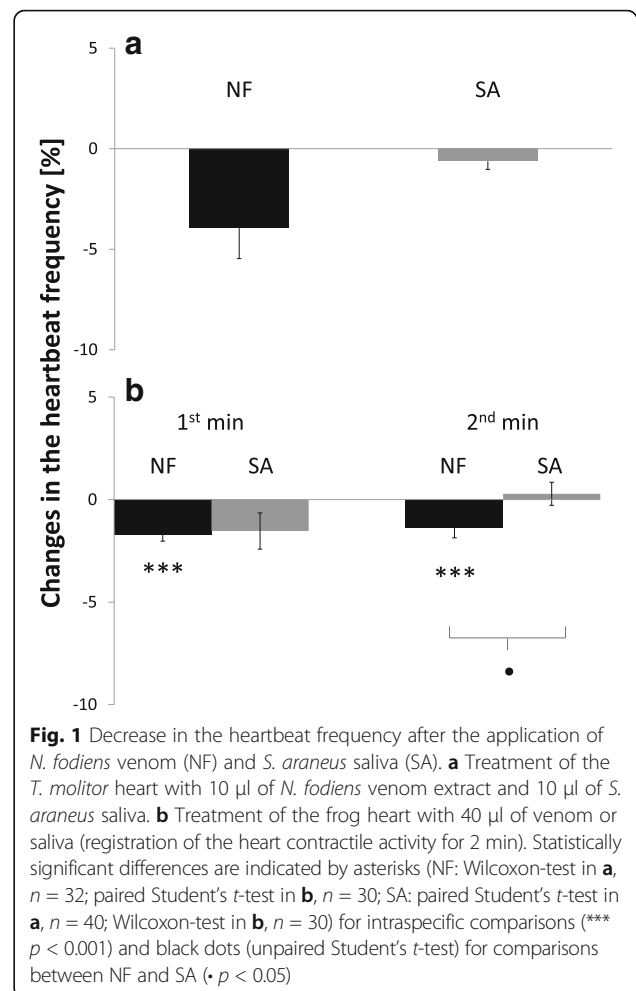


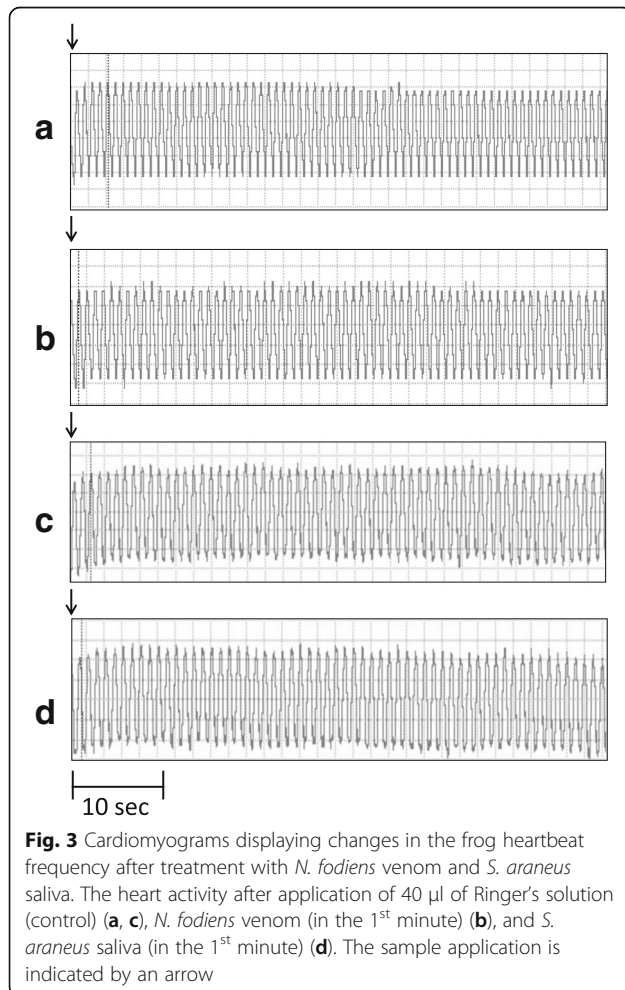
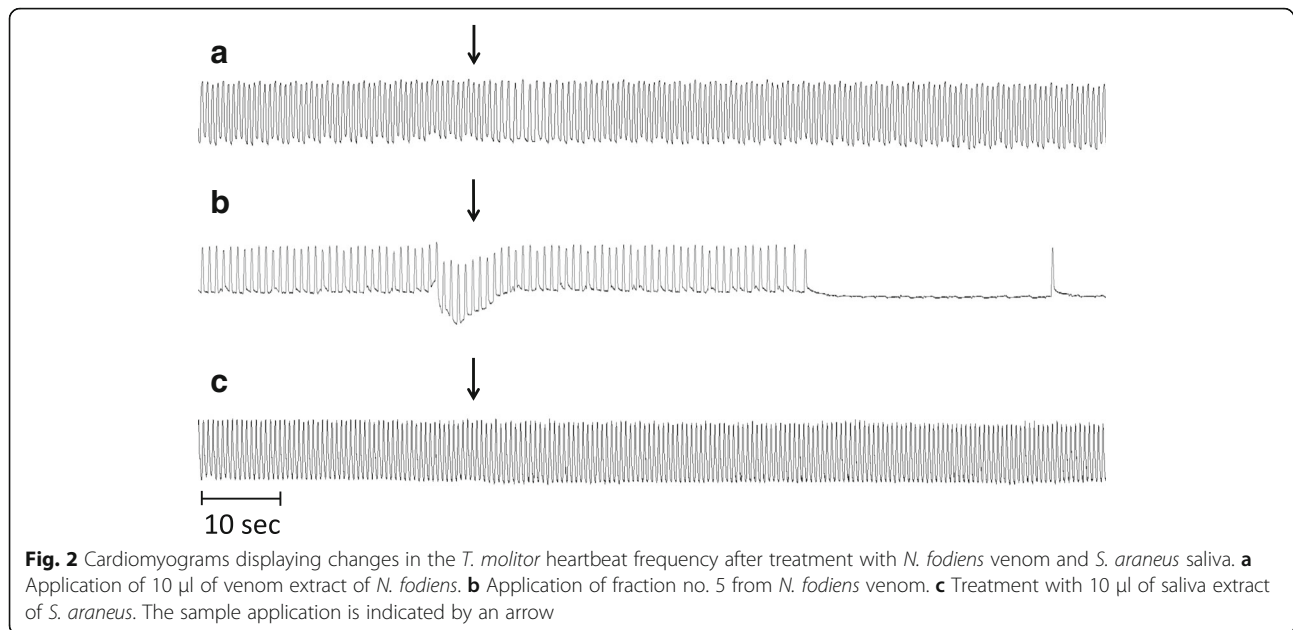
Fig. 1 Decrease in the heartbeat frequency after the application of *N. fodiens* venom (NF) and *S. araneus* saliva (SA). **a** Treatment of the *T. molitor* heart with 10 µl of *N. fodiens* venom extract and 10 µl of *S. araneus* saliva. **b** Treatment of the frog heart with 40 µl of venom or saliva (registration of the heart contractile activity for 2 min). Statistically significant differences are indicated by asterisks (NF: Wilcoxon-test in **a**, $n = 32$; paired Student's *t*-test in **b**, $n = 30$; SA: paired Student's *t*-test in **a**, $n = 40$; Wilcoxon-test in **b**, $n = 30$) for intraspecific comparisons (***) $p < 0.001$) and black dots (unpaired Student's *t*-test) for comparisons between NF and SA ($\bullet p < 0.05$)

However, this result was significant only in the 2nd minute after sample application (Fig. 1b).

From 55 fractions obtained after the RP-HPLC (reverse phase high-performance liquid chromatography) separation of *N. fodiens* venom, 25 fractions were selected to analyse the cardioactivity in bioassays with the *T. molitor* heart (Fig. 4a). In the case of *S. araneus*, 16 fractions were assayed (Fig. 4b).

Among compounds from *N. fodiens* venom, fraction no. 5 caused a strong and highly significant decrease in the insect heart contractile activity ($-43.7\% \pm 9.40$; Fig. 5a). Moreover, in most cases, we observed a short and reversible cardiac arrest after the application of fraction no. 5 on the insect heart (Fig. 2b). Most of the other components (especially fractions no. 31, 34, 38 and 40) caused a small but significant increase in the heartbeat activity (Fig. 5a).

Among the components from the saliva of *S. araneus*, no fractions displayed cardioactivity (Fig. 5b). We did not observe any changes in the heartbeat frequency of the adult *T. molitor*. Only the application of fraction no. 29 caused an almost significant change. However, an



increase in the insect heart contractile activity after the application of this fraction was very low ($2.58\% \pm 1.14$; Fig. 5b). The results of statistical analysis of this part are available in the Additional files section (see Additional file 1).

In vitro effects of venom from the water shrew on the frog calf muscle activity

The venom of the water shrew displayed a significant influence on the contractions of frog calf muscle. Immediately after the application of the venom on the muscle, the force of the muscle contraction was reduced by $9.86\% \pm 1.98$. One minute after venom application, the muscle activity was still significantly decreased ($-10.66\% \pm 1.78$; Fig. 6a). We did not observe such an influence of the saliva of the common shrew on the frog calf muscle contraction activity (Fig. 6a). Immediately after saliva application, the force of the muscle contraction was reduced by $3.50\% \pm 1.66$. One minute later, it was reduced by $1.10\% \pm 1.19$. Furthermore, *N. fodiens* venom displayed a stronger negative influence on muscle activity than saliva of the common shrew. This difference was almost significant immediately after sample application, whereas it was highly significant 1 min later (Fig. 6a).

In vitro effects of venom from the water shrew on the frog sciatic nerve activity

The venom of *N. fodiens* displayed a very strong negative effect on the frog sciatic nerve activity. Immediately after venom application, we observed a highly significant decrease in the nerve conduction velocity ($-20.45\% \pm 2.98$; Fig. 6b). Similarly, 1 min after venom application, the activity of the frog nerve was still significantly decreased

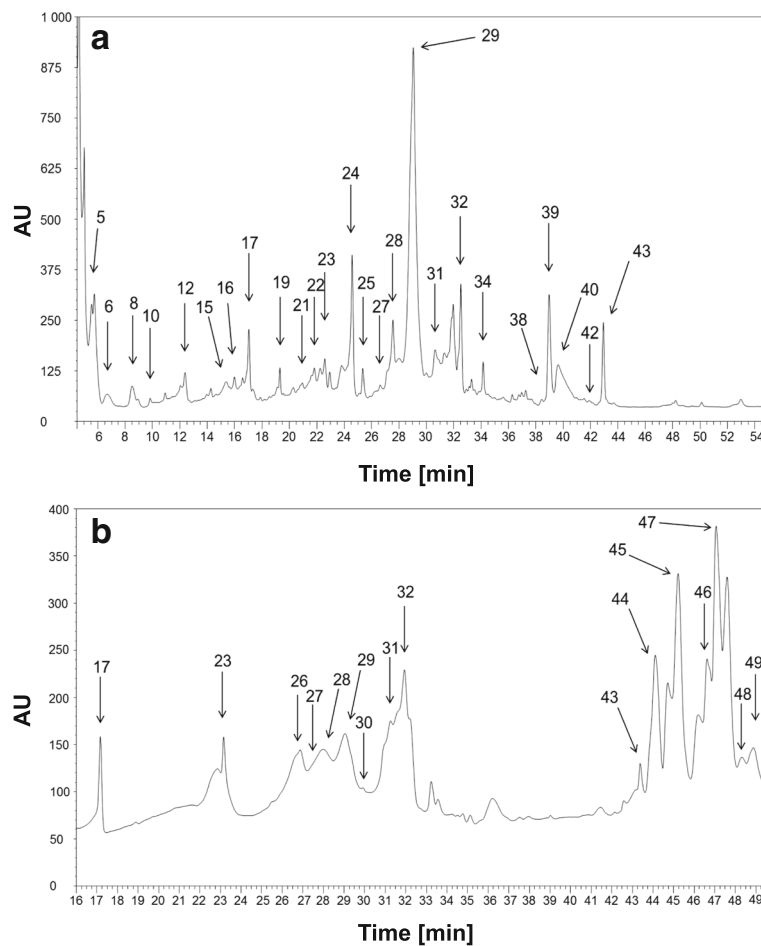


Fig. 4 Chromatograms displaying separation of the methanolic extract of the saliva of *N. fodiens* (a) and *S. araneus* (b). The analysed fractions are indicated by arrows

($-12.67\% \pm 2.28$; Fig. 6b). We did not record such a change immediately after the application of *S. araneus* saliva on the frog sciatic nerve ($-5.33\% \pm 1.08$; Fig. 6b). By contrast, 1 min after treatment with the saliva of the common shrew, there was a small but significant increase in the nerve conduction velocity ($3.43\% \pm 1.48$; Fig. 6b). Moreover, the venom of the water shrew displayed a stronger negative neurotropic effect on the frog sciatic nerve than the saliva of the common shrew. This difference was highly significant both immediately after venom application and 1 min later (Fig. 6b).

Proteomic pre-identification of proteins from *N. fodiens* venom and *S. araneus* saliva

Preliminary mass spectrometry (MS) analysis enabled us to predict some protein/peptide molecules that are present in *N. fodiens* venom and might be involved in its toxic activity (Table 1). Calmodulin-like protein, thymosin β -10, hyaluronidase and β -nerve growth factor were found in the methanolic extract from *N. fodiens* venom.

Among the compounds determined in fractions, obtained by chromatographic separation, were hyaluronidase (fraction no. 39), cystatin C (fraction no. 5), coagulation factor VIII (fractions no. 5 and 39), lactylglutathione lyase (fraction no. 39) and inhibitor of leech-derived tryptase (fraction no. 34). Additionally, lysozyme C was found in fraction no. 5, whereas phospholipase A2 and calmodulin-like protein were present in fraction no. 40. Phospholipase A2 (protein sequence coverage: 4%) was also detected in the methanolic extract of *N. fodiens*.

Thymosin β -10 and coagulation factor XI were present in the saliva of *S. araneus*, whereas cystatin-C was found in fractions no. 23, 28 and 29 (Table 1). Additionally, we found thymosin β -4 in fraction no. 23, lysozyme C in fraction no. 28 and β -defensin in fraction 29, as well as kallikrein 1-related peptidase in fraction no. 28. Nonetheless, these results should be treated with caution as further analyses (including obtaining a larger quantity of tissue material or more precise saliva purification) are required.

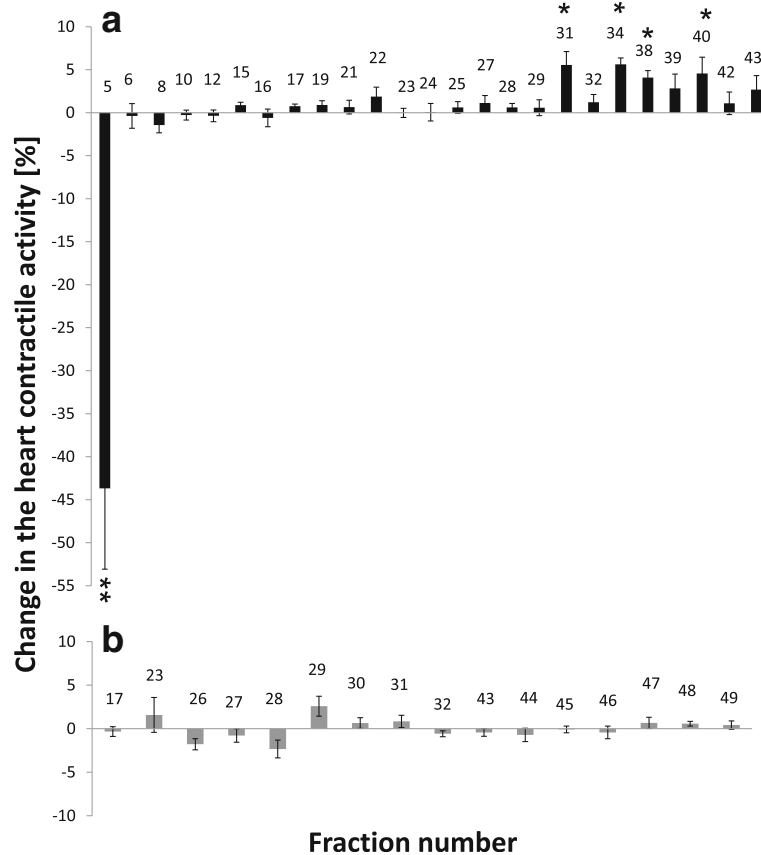
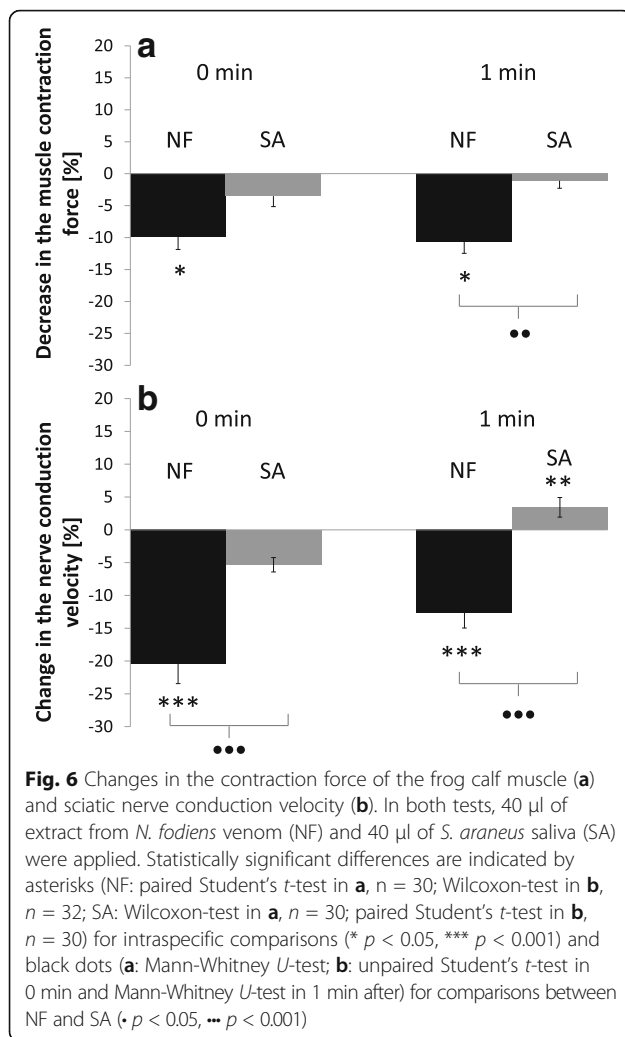


Fig. 5 Effects of fractions from *N. fodiens* venom (a) and *S. araneus* saliva (b) on the *T. molitor* heartbeat frequency. Statistically significant changes in the heart contractile activity are indicated by asterisks (Wilcoxon-test after Bonferroni correction: * $p' < 0.05$, ** $p' < 0.01$)

Discussion

At the end of the 50s and 60s of the last century, Pucek [16, 17] discovered that *N. fodiens* and *N. anomalus* produce in their salivary glands a potent venom that is toxic to mammals such as mice, voles and rabbits. The strongest toxic effects of saliva were revealed after intracerebral (mice and voles) and intravenous injections (rabbits). Following injection, experimental animals were overcome by a general depression and showed symptoms that included excessive urination, irregular respiration, paralysis of the hind limbs, convulsions and, finally, death [16, 17]. Similar symptoms were observed when the saliva of *B. brevicauda* was administered to mice, voles, rabbits and cats [7, 18, 19]. As noted by Lawrence [20], the venom of *B. brevicauda* displays predominantly neurotoxic activity. Our results also prove that the venom from the water shrew has stronger paralytic (neuro- and myotoxic) activity, whereas its cardiotropic effect on the frog and beetle heartbeat frequency is relatively small. At first, it might seem surprising, but it becomes more comprehensible when the food and metabolic requirements of shrews are taken into consideration.

It is well known that shrews must consume a large amount of food to meet their particularly high metabolic demands [21, 22]. Although shrews are mainly insectivorous, it has been repeatedly reported that they can also consume vertebrates, even larger than themselves, such as murid rodents, fish, frogs or lizards [23–26]. Therefore, it might be expected that venom could be a useful tool in catching and paralyzing larger prey [7, 8]. Hunting larger prey might provide the food supply for a longer time, especially if the prey remains paralysed and decomposes considerably slowly. According to the optimal foraging theory, the hoarding of a food supply can save energy and time spending on prey foraging and catching. Furthermore, it might also minimize the risk of predation [27–29]. The food-storing habits of shrews have also been reported [21, 30–33]. According to Rychlik and Jancewicz [33], the water shrew usually hoards larger prey than other shrew species. Therefore, it is highly probable that *N. fodiens* can employ its venom to seize and immobilize such prey. Our results also support the hypothesis that *N. fodiens* venom may be a useful tool in the handling and paralyzing of larger prey.



However, it should be noticed that Pucek [16, 17] observed the conspicuous effects of the water shrew venom after intracerebral and intravenous injections. We do not deny these results, but it seems that the recorded symptoms could partly result from mechanical damage caused by the insertion of a needle into the brain rather than from venom injection. Therefore, in our study, we analysed the responses of specific organs to venom application in *in vitro* bioassays instead of an examination of the whole organism response. Moreover, Pucek [16, 17] and Pearson [18] characterized only the properties of crude extracts from the salivary glands of shrews. In the present work, besides the investigation of the activity of salivary extract from the venom, for the first time, we examined the toxic activity of selected compounds from *N. fodiens* venom and *S. araneus* saliva fractionated by chromatographic separation.

In general, our results indicate that many components from *N. fodiens* venom have a weak but positive chronotropic influence on *T. molitor* heart contractile activity.

However, fraction no. 5 displayed a strong negative chronotropic effect on the heartbeat frequency coupled with a short and reversible cardiac arrest. It has been reported that *B. brevicauda* can use the venom as an insect-immobilizing agent [20, 34]. Thus, due to the cardioinhibitory activity of at least one molecule contained in the *N. fodiens* venom, we suppose that the water shrew can also employ its venom to hunt certain invertebrate prey, such as larger beetles, diplopods or crickets.

Most animal venoms comprise a mixture of bioactive compounds, such as proteins and peptides, salts or amino acids [35–37]. Therefore, it is highly probable that certain neurotoxins or proteins, similar to BLTX, may be present in the venom of *N. fodiens*. We are aware that obtaining a larger quantity of tissue material (by pooling extracts from salivary glands collected from at least 25 specimens) or more precise purification of fractionated samples are required to identify specific toxic molecules from the water shrew venom. Nevertheless, preliminary MS analysis did enable us to predict specific toxic compounds that presumably are present in *N. fodiens* venom and might be involved in its toxic activity. We suggest that calmodulin-like protein or cystatin C might contribute to the decrease in the frequency of the heartbeat. Zhang et al. [38] found that calmodulin may have acute and chronic effects on cardiac function. Cystatin-C has been proven to inhibit cysteine proteases and lead to neuro-degeneration and cardiovascular diseases [39]. In addition, we found lysozyme C and phospholipase A2 (PLA2) in fractions no. 5 and 40 from *N. fodiens* venom. Dufton [7] also reported lysozyme from the saliva of the water shrew, whereas PLA2 is widely distributed among elapid and viperid snake venoms [40, 41]. It has been proven that PLA2 molecules exhibit various pharmacological effects, such as cardio-, myo- and neurotoxicity, as well as pro- and anticoagulant effects [40, 41]. Therefore, it is possible that phospholipase A2 might also be responsible for the paralytic and cardiotoxic symptoms recorded by us, but these conclusions are, by far, more speculative. Hyaluronidase, which is commonly present in animal venoms [42], might promote the spreading of these and the other components from *N. fodiens* venom [36, 42]. Additionally, it is highly possible to reveal kallikrein-like proteins (similar to BLTX) in the venom of the water shrew, especially because, in the present work, we found kallikrein 1-related peptidase in the saliva of the common shrew.

It is noteworthy that, in our study, the saliva of *S. araneus* has been analysed for the first time. We did not record any significant effects of the salivary extract from the common shrew on the heart, nerve or muscle activity. Similarly, none of the fractionated compounds from *S. araneus* saliva displayed cardiotoxic effects on the *T. molitor* heart. These results prove that *S. araneus* is not

Table 1 Pre-identification of proteins from *N. fodiens* venom and *S. araneus* saliva based on tandem mass spectrometry analysis

Sample	Protein name	Species	Accession	Matched peptides	Protein sequence coverage [%]	Ion score	m/z	Identified peptides	Possible toxic activity
extract	calmodulin-like protein	<i>Mus musculus</i>	Q9D6P8	25	37	64	955	KEAFSLFDK.D	Acute and chronic effects on cardiac function by regulation of the intracellular Ca ²⁺ concentration [38]
				37	37	37	4086	RSLGQNPTAEALOGMNEI DKDNGTVDFPEFLTMSRK + Oxidation (M)	
				57	57	57	4102	RSLGQNPTAEALOGMNEID KDGNGTVDFPEFLTMSRK + 2 Oxidation (M)	
				97	97	97	1351	KMKDTSSEERE	
				81	81	81	1367	KMKDTSSEERE.E + Oxidation (M)	
				65	65	65	1092	KDITDSEERE	
				24	24	24	980	HKMPLDPK	
				22	22	22	862	KTETQEK	
				68	68	68	1153	KLQHSLDLALRR	
				37	37	37	764	RRLHSPRV	
fraction no. 5	cystatin-C	<i>Rattus norvegicus</i>	P14841	14	8	28	1207	GTHLTLSCK	Facilitates spread of other venom proteins [36, 42] Improves cardiac function, promotes vascularization and contractility in heart tissue [52, 53] Unknown [36, 54] Inhibits cysteine proteases, failures in biological mechanisms controlling protease activities may led to many diseases such as neuro-degeneration or cardiovascular diseases [39] Acts as an anti-hemophilic factor [55] Involved in an antimicrobial defence [10, 56] See above Prolongs the blood clotting time by thrombin and trypsin inhibition [57]
				18	5	22	1427	ISALGKSAAGPLASGK	
				6	8	24	930	YWCNDGK	
				14	11	47	1152	KDIEFYPK	
				48	21	177	2210	RLGHEHNIDVLEGNQFINAAKI	
				14	11	115	2282	KIITHPNFNGNTLDNDIMLIK	
				48	21	93	1045	KLSSPATLNSRV	
				14	8	77	841	RVATVSLPRS	
				19	7	108	1515	KSSGSSYPSLLOCLKA	
				17	25	98	1051	KAPVLSDSCK.S	
fraction no. 39	coagulation factor VIII lactylglutathione lyase	<i>Sus scrofa</i>	P12263	19	7	23	1427	ISALGKSAAGPLASGK	See above Involved in inflammation [58]
				17	25	78	1264	KDFLLQQTMLRI	
				17	25	54	1028	KKSLDFYTRV	
				17	25	44	900	KSLDFYTRV	
				17	25	57	976	KRFEELGVKF	
				17	25	65	2288	KGLAFVQDPDGYWIELNPNKIM	

Table 1 Pre-identification of proteins from *N. fodiens* venom and *S. araneus* saliva based on tandem mass spectrometry analysis (Continued)

Sample	Protein name	Species	Accession	Matched peptides	Protein sequence coverage [%]	Ion score	m/z	Identified peptides	Possible toxic activity
fraction no. 40	phospholipase A2	<i>Oryctolagus cuniculus</i>	P14422	6	6	27	1002	FAKFLSYK	Exhibits cardio-, myo- and neurotoxicity, as well as pro- and anticoagulant effects [40, 41]
		<i>Mus musculus</i>	Q9D6P8	14	5	25	1367	MKDTDSEER	
extract	thymosin β -10	<i>Sorex araneus</i>				56	862	KKTETQEKIN	See above
		<i>Rattus norvegicus</i>	P63312	7	34	37	734	KTETQEKIN	
fraction no. 23	coagulation factor XI	<i>Mus musculus</i>	Q91Y47	10	11	21	846	MICAGYK	Involved in blood clotting [59] See thymosin β -10
		<i>Oryctolagus cuniculus</i>	P34032	69	88	46	1245	MADKPDMAIEIKF	
				47	1652	MADKPDMAIEIKFDKS + Oxidation (M)			
				34	862	KKTETQEKIN			
				38	734	KTETQEKIN			
				83	1371	KTETQEKINPLPSKE			
				89	1512	KNPLPSKETIEQEKQ			
				43	875	KETIEQEKQ			
				72	1348	KETIEQEKQAGES-			
				27	1207	GTHLTKSSCK			
fraction no. 28	cystatin-C	<i>Rattus norvegicus</i>	P14841	14	8	27	1207	GTHLTKSSCK	See above
		<i>Rattus norvegicus</i>	P14841	11	6	43	1207	KGTHLTKSSCKIN	See above
	lysozyme C-1	<i>Sus scrofa</i>	P12067	10	19	22	787	AWAWR	See above
		<i>Mus musculus</i>	Q61754	10	6	33	1204	KDKSNDLMLLRL	Might act as an inflammatory agent (increasing vascular permeability and lowering blood pressure) [8, 9]
fraction no.29	cystatin-C	<i>Rattus norvegicus</i>	P14841	14	8	27	1207	GTHLTKSSCK	See above
		<i>Mus musculus</i>	P00687	8	11	25	780	DYVRTK	Unknown
		<i>Mus musculus</i>	Q91V70	8	11	24	760	FOIPEK	Exhibits a significant myo- and neurotoxic activity, modifying voltage-sensitive Na ⁺ channels, resulting in a potent analgesic effect [36]

a venomous mammal. It seems there are no venomous species among the genus of *Sorex*. Suspicion remains concerning the cinereus shrew (*S. cinereus*), but its saliva has not been characterized thus far [9]. Lopez-Jurado and Mateo [26] suggested that the Canarian shrew (*Crocidura canariensis*) produces toxic saliva. However, as in the case of *S. cinereus*, the saliva of *C. canariensis* has not been analysed. More studies are required to prove the toxicity of saliva from these two species. It seems that smaller shrews, such as the common shrew, do not need to produce molecules with toxic activity in their saliva because they are unlikely to subdue large vertebrate prey, such as murid rodents or frogs. Our behavioural data provide experimental confirmation of this prediction as well (Kowalski et al., unpublished observations).

Conclusions

Our results show that the venom of the water shrew displays stronger paralytic effects and lower cardioinhibitory activity. Therefore, we conclude that *N. fodiens* venom might be a useful tool in hunting and immobilizing larger prey. Additionally, for the first time, we separated and examined compounds from the water shrew venom and *S. araneus* saliva. Certain components from *N. fodiens* venom showed a weak positive impact on *T. molitor* heart contractile activity. However, we found that component(s) of sample no. 5 showed a strong negative chronotropic effect on the insect heart coupled with a reversible cardiac arrest. It enabled us to conclude that the water shrew can employ its venom to seize certain invertebrates, such as beetles or diplopods. Because none of the components from *S. araneus* saliva displayed toxic effects, we confirmed that the common shrew is not a venomous mammal. We suggest carrying out further analyses with a larger quantity of tissue material and more precise sample purification to identify proteins from the venom of *N. fodiens*. We are convinced that the present findings and further studies will enable us to better understand the role of venom in the animal world and mammal evolution in relation to toxicity. Moreover, because animal toxins can have applications in medicine and pharmacy [5, 43, 44], it is highly probable that our results also provide the opportunity for the design and development of new drugs, such as cardiac or neuromuscular blocking agents.

Methods

Animals

Shrews

Trapping sessions were performed in the suburbs of Poznań (western Poland) from April to October 2014–2016, excluding the coldest days. In total, we captured 25 water shrews and 25 common shrews. The captured

shrews were transported to the laboratory. Next, the animals were placed separately into large (39 × 21 × 28 cm; 23 L) terraria equipped with bedding (a mixture of peat, moss and sand). Each terrarium contained a shelter (flowerpot) and a bowl with water. Food (mealworms, minced beef, earthworms and snails) and water were provided *ad libitum*. The shrews were kept in the breeding room under standard laboratory conditions (temperature: 21 °C; humidity: 65–70%; artificial photoperiod: 12 L:12D). After about a week, they were killed using approved methods to obtain their submandibular salivary glands.

Frogs

Frogs [15 common frogs (*Rana temporaria*) and 37 frogs from the genus of *Pelophylax* sp.] were captured by a net near ponds and small water tanks located in the Morasko district of Poznań (western Poland).

Insects

Tenebrio molitor L. adults (4 weeks old) were obtained from a culture maintained at the Department of Animal Physiology and Development, Adam Mickiewicz University, Poznań, Poland, as described previously [45].

Venom/saliva collection and sample preparation

Shrews were killed by cervical dislocation, and their submandibular salivary glands were carefully isolated to obtain venom or saliva. Glands ($n = 15$; from each shrew species) designed for heart bioassays were transferred into 600 μ l of insect Ringer's solution (RS: 274 mM NaCl; 19 mM KCl; 9 mM CaCl₂; 5 mM glucose, and 5 mM HEPES, pH 7.0; bioassays with extract on the semi-isolated beetle heart) or 600 μ l of frog Ringer's solution (bioassays on frog organs). Glands ($n = 10$, from each shrew species) designed for chromatographic separation were transferred into 600 μ l of methanol. Tissues were next homogenized, and samples were centrifuged at 10,000 × g and 4 °C for 30 min. The supernatants were collected, and the protein content was determined using a Direct Detect spectrometer (MERCK Millipore, Warsaw, Poland). Extracts with a final protein concentration of 1 μ g/ μ l were used for bioassays.

Chromatographic separation

Supernatants suspended in methanol were used for peptide analysis by reverse phase high-performance liquid chromatography (RP-HPLC). Separation was performed using a Dionex Ultimate 3000 chromatographic system comprising a dual pump programmable solvent module. Supernatants were analysed using a BioBasic-18 analytical column (5 μ m, 150 × 4.6 mm; Thermo Scientific). The samples were eluted with a gradient of 5–60% acetonitrile (ACN)/0.1% TFA with a flow rate of 0.5 ml/

min for 55 min. The eluent was monitored at 214 nm, and fractions were collected into 1.5-ml tubes. Next, ACN was evaporated, and samples were suspended in 70 μ l of RS to determine the toxic activity of the separated components by performing bioassays on the semi-isolated *T. molitor* hearts.

In vitro insect heart bioassay

Cardioactivity of the water shrew venom was assayed on the hearts of adult *Tenebrio molitor* and frogs. The microdensitometric method was used to measure the chronotropic (change in frequency) effect of samples on the semi-isolated heart of the adult beetle [46]. Briefly, *T. molitor* adults were decapitated, and the abdomen was removed. The ventral body wall of the abdomen was excised. The fat body, digestive system, and Malpighian tubules were removed from the abdomen. The final preparation consisted of the dorsal vessel (the heart), wing muscles, body wall muscles, and the dorsal cuticle. The heart preparations with a regular heartbeat were selected and superfused in RS. The superfusion chamber with the heart preparation was installed into the microdensitometer MD-100 (Carl Zeiss, Jena, Germany). An open perfusion system with an injection port 70 mm above the superfusion chamber was used. The flow rate of the fresh RS was 140 μ l/min, and excess solution was removed from the superfusion chamber using chromatographic paper (Whatman No. 3, UK). All tested samples were applied at the injection port with a Hamilton syringe (10 μ l). Many applications of samples could be sequentially assayed in a single preparation. The open system was designed to enable the addition of the samples avoiding changes in pressure. After 10 min of initial stabilization, the activity of the isolated heart was recorded for 30 s. Next, the sample was applied, and the heart activity was recorded for a further 1.5 min. This procedure was repeated with 5-min intervals for each tested sample.

Computer software (Larwa) developed at the Department of Animal Physiology and Development was used to record and analyse the cardiomyograms [47]. The activities of the analysed samples were presented as the percentage change in the frequency of the beetle heart contractions after sample application.

In vitro frog heart bioassay

Frogs were decapitated, and the skin from the thorax was removed. The thorax wall was excised, and the pericardium was carefully removed (to not damage the heart). The mechanical responses of the spontaneously contracting, semi-isolated frog heart were measured by attaching one end of a thread to the apex of the heart using a clip and the other end to a force transducer (MLT 0420; ADInstruments, Australia). The contractile

activity of the frog heart (the number of heart contractions/min) was recorded using a Power Lab 26T System (ADInstruments, Australia) attached to a computer equipped with Chart 5.5.4 software [48]. A given heart bioassay consisted of 5 steps:

- (1) measurement of the heart contractile activity (HCA) for 1 min immediately after the isolation of the frog heart;
- (2) measurement of HCA for 1 min after 40 μ l of RS application on the semi-isolated frog heart (control test);
- (3) measurement of HCA for 1 min after 40 μ l of venom application on the semi-isolated frog heart;
- (4) measurement of HCA for 1 min after step 3 (sometimes the effect of the venom appears in the 2nd minute after venom application);
- (5) measurement of HCA for 1 min after 40 μ l of RS application on the semi-isolated frog heart (to check the heart ability to recover).

This procedure was repeated with 5-min intervals for each tested sample. A maximum of 3 samples were applied on a single frog heart. The activities of the samples were presented as the percentage change in the frequency of the frog heartbeat after sample application.

In vitro frog muscle bioassay

After frog decapitation, the skin from the hind part of the body and hind legs was removed. Next, the calf muscle was carefully isolated and transferred into a tub connected to the electrical stimulator incorporated into the Power Lab 26T unit. To stimulate the contraction of frog muscle, a 500-mV voltage was applied. The mechanical responses of the isolated muscle were measured by attaching one end of a thread to the tendon of muscle and the other end to a force transducer (MLT 0420; ADInstruments, Australia). The force of the muscle contraction was recorded using a Power Lab 26T System (ADInstruments, Australia) attached to a computer equipped with Chart 5.5.4 software [49]. A given muscle bioassay consisted of 5 steps (occurring with 1-min intervals):

- (1) measurement of the muscle contraction force (MCF) immediately after the isolation of the frog muscle;
- (2) measurement of MCF immediately after 40 μ l of RS application on the isolated frog muscle (control test);
- (3) measurement of MCF immediately after 40 μ l of venom application on the isolated frog muscle;
- (4) measurement of MCF 1 min after venom application;
- (5) measurement of MCF after 40 μ l of RS application (to check the muscle ability to recover).

This procedure was repeated with 5-min intervals for each tested sample. A maximum of 3 samples were applied on a single frog calf muscle. The activities of samples were presented as the percentage change in the force of the muscle contraction after sample application.

In vitro frog nerve bioassay

After frog decapitation, the skin from the hind part of the body and hind legs was removed. The ventral wall of the body was excised, and the viscera were removed. Next, the nerve trunk was looped, and the sciatic nerve was carefully isolated (to not damage it) and transferred into a tub connected to the electrical Power Lab 26T as described previously. To stimulate the conduction velocity of the frog nerve, a 500-mV voltage was applied. The conduction velocity was recorded using the Power Lab 26T System (ADInstruments, Australia) attached to a computer [50]. The protocol of a given nerve bioassay was the same as that of a muscle assay.

This procedure was repeated with 5-min intervals for each tested sample. A maximum of 3 samples were applied on a single frog nerve. The activities of the samples were presented as the percentage change in the conduction velocity of the frog nerve after sample application.

Protein identification

Proteomic analysis was carried out at the Mass Spectrometry Laboratory, Institute of Biochemistry and Biophysics, Polish Academy of Sciences, Warsaw. Peptides from the extract of *N. fodiens* venom and *S. araneus* saliva were analysed by liquid chromatography coupled to tandem mass spectrometry LC-(MS-MS/MS) using a NanoAcquity LC system (Waters, Milford, Massachusetts, USA) and an OrbitrapVelos mass spectrometer (Thermo Electron Corp., San Jose, CA). Before performing the analysis, the proteins were subjected to an ion-solution digestion procedure. Proteins were (1) reduced with 50 mM TCEP for 30 min at 60 °C, (2) alkylated with 200 mM MMTA for 30 min at room temperature and (3) digested overnight with trypsin (sequencing Grade Modified Trypsin - Promega V5111). Next, the samples were applied to an RP-18 precolumn (nanoACQUITY Symmetry® C18 - Waters 186,003,514) using water containing 0.1% TFA as a mobile phase and were transferred to a nano-HPLC RP-18 column (nanoACQUITY BEH C18 - Waters 186,003,545). The samples were eluted with a gradient of 0–35% acetonitrile in the presence of 0.05% formic acid with a flow rate of 250 nl/min for 180 min. The column was directly coupled to the ion source of the spectrometer working within data dependent on the MS to MS/MS switch. To ensure a lack of cross contamination from previous samples, each analysis was preceded by a blank run. The proteins were identified by a Mascot Search (Matrix Science, London, UK) against the SwissProt and NCBI

databases. The search parameters were as follows: type of search: MS/MS Ion Search; enzyme specificity: trypsin; fixed methylthio modification of cysteine; variable modifications: methionine oxidation; mass values: monoisotopic; protein mass: unrestricted; peptide mass tolerance: 30 ppm; fragment mass tolerance: 0.1 D; number of missed cleavage sites allowed: 1; instrument type: HCD. Peptides with Mascot scores exceeding the threshold value of $p < 0.05$ were considered positively identified.

Data analysis

All data were presented as the mean values \pm SEM (standard error of the mean) of the indicated number of replicates (n). The mean differences between the treatment and control group were determined using paired Student's *t*-test or Wilcoxon signed-rank test. To indicate statistically significant differences between *N. fodiens* venom and *S. araneus* saliva activity, unpaired Student's *t*-test or Mann-Whitney *U*-test was performed. Non-parametric tests (Wilcoxon signed-rank and Mann-Whitney) were performed when the datasets of non-normal distributions were compared. To counteract the problem of multiple comparisons, Bonferroni correction was performed. All statistical analyses were carried out using R software [51]. Differences were considered as statistically significant for *p*-values less than 0.05.

Additional file

Additional file 1: Table S1. Cardiotropic effects of compounds from *Neomys fodiens* venom and *Sorex araneus* saliva on the *Tenebrio molitor* heartbeat frequency (* results are presented as percentage change in the heartbeat frequency \pm SEM; n - number of replicates, *W* - Wilcoxon test value, *p'* - *p*-value after Bonferroni correction). (DOCX 19 kb)

Acknowledgements

We are very grateful to M. Szymczak and J. Ziomek for help in laboratory work, to U. Eichert, G. Kowalski, S. von Merten, P. Kardynia, S. Dziemian-Zwolak, A. Kret, K. Bauer, A. Grozeller, P. Klimant, J. Borska, N-E. Karantanis and M. Pejka for help in field works.

Funding

The research was financially supported by grant no. 2015/17/N/NZ8/01567 from National Science Centre, Poland and, in part, by the budget of the Department of Systematic Zoology (Faculty of Biology, AMU, Poznań). The equipment used in proteomic analysis was sponsored in part by the Centre for Preclinical Research and Technology (CePT), a project co-sponsored by European Regional Development Fund and Innovative Economy, The National Cohesion Strategy of Poland.

Availability of data and materials

Not applicable.

Authors' contributions

All authors conceived and designed the experiments; KK and LR captured most experimental animals; KK and PM performed the experiments; KK and PM analysed the data; KK wrote the paper; PM, GR and LR revised and edited the manuscript. All authors read and approved the final manuscript.

Ethics approval and consent to participate

Trapping procedure, handling, housing of animals and all physiological bioassays were performed in accordance with licenses of the Local Ethical Committee for the Animal Experiments in Poznań, the Regional Director for Environmental Protection in Poznań and the General Director for Environmental Protection.

Consent for publication

Not applicable

Competing interest

The authors declare that they have no competing interests.

Publisher's Note

Springer Nature remains neutral with regard to jurisdictional claims in published maps and institutional affiliations.

Author details

¹Department of Systematic Zoology, Institute of Environmental Biology, Adam Mickiewicz University, Umultowska 89, 61-614 Poznań, Poland.

²Department of Animal Physiology and Development, Institute of Experimental Biology, Faculty of Biology, Adam Mickiewicz University, Umultowska 89, 61-614 Poznań, Poland.

Received: 10 May 2017 Accepted: 18 September 2017

Published online: 30 September 2017

References

- Ménez A, Bontems F, Roumestand C, Gilquin B, Toma F. Structural basis for functional diversity of animal toxins. *P Roy Soc Edinb B*. 1992;99:83–103.
- Dumbacher JP, Spande TF, Daly JW. Batrachotoxin alkaloids from passerine birds: A second toxic bird genus (*Ifrita kowaldi*) from New Guinea. *PNAS*. 2000;97:12970–5.
- Kita M. Bioorganic studies on the key natural products from venomous mammals and marine invertebrates. *Bull Chem Soc Jpn*. 2012;85:1175–85.
- Von Reumont BM, Campbell LI, Jenner RA. *Quo vadis* venomics? A road map to neglected venomous invertebrates. *Toxins*. 2014;6:3488–551.
- Rode-Margono JE, Nekaris KAI. Cabinet of curiosities: venom systems and their ecological function in mammals, with a focus on primates. *Toxins*. 2015;7:2639–58.
- Uemura D, Kita M, Arimoto H, Kitamura M. Recent aspects of chemical ecology: natural toxins, coral communities, and symbiotic relationships. *Pure Appl Chem*. 2009;81:1093–111.
- Dufton MJ. Venomous mammals. *Pharmacol Ther*. 1992;53:199–215.
- Kita M, Nakamura Y, Okumura Y, Ohdachi SD, Oba Y, Yoshikuni M, Kido H, Uemura D. Blarina toxin, a mammalian lethal venom from the short-tailed shrew *Blarina brevicauda*: isolation and characterization. *PNAS*. 2004;101:7542–7.
- Ligabue-Braun R, Verli H, Carlini CR. Venomous mammals: a review. *Toxicon*. 2012;59:680–95.
- Low DHW, Sunagar K, Undheim EAB, Ali SA, Alagon AC, Ruder T, Jackson TNW, Pineda Gonzales S, King GF, Jones A, Antunes A, Fry BG. Dracula's children: molecular evolution of vampire bat venom. *J Proteome*. 2013;89:95–111.
- Nekaris KAI, Moore RS, Rode EJ, Fry BG. Mad, bad and dangerous to know: the biochemistry, ecology and evolution of slow loris venom. *J Venom Anim Toxins incl Trop Dis*. 2013;19:21.
- Whittington CM, Belov K. Tracing monotreme venom evolution in the genomics era. *Toxins*. 2014;6:1260–73.
- Rabb GB. Toxic salivary glands in the primitive insectivore *Solenodon*. *Nat Hist Misc*. 1959;190:1–3.
- Pournelle GH. Classification, biology and description of the venom apparatus of insectivores of the genera *Solenodon*, *Neomys*, and *Blarina*. In: Bücherl W, Buckley EE, Deulofeu V, editors. *Venomous animals and their venoms*. New York: Academic Press; 1968. p. 31–42.
- Kita M, Okumura Y, Ohdachi SD, Oba Y, Yoshikuni M, Nakamura Y, Kido H, Uemura D. Purification and characterisation of blarinasin, a new tissue kallikrein-like protease from the short-tailed shrew *Blarina brevicauda*: comparative studies with blarina toxin. *Biol Chem*. 2005;386:177–82.
- Pucek M. The effect of the venom of the European water shrew (*Neomys fodiens fodiens* Pennant) on certain experimental animals. *Acta Theriol*. 1959;3:93–108.
- Pucek M. *Neomys anomalus* Cabrera, 1907 - a venomous mammal. *Bull Acad Pol Sci*. 1969;17:569–73.
- Pearson OP. On the cause and nature of a poisonous action produced by the bite of a shrew (*Blarina brevicauda*). *J Mammal*. 1942;23:159–66.
- Pearson OP. A toxic substances from the salivary glands of a mammal (short-tailed shrew). *Venoms*. 1956;44:55–8.
- Lawrence B. Brief comparison of short-tailed shrew and reptile poison. *J Mammal*. 1945;26:393–6.
- Churchfield S. *The natural history of shrews*. 1st ed. UK: Comstock Publishing/Cornell University Press; 1990.
- Taylor JRE. Evolution of energetic strategies in shrews. In: Wójcik JM, Wolsan M, editors. *Evolution of shrews*. Białowieża: Mammal Research Institute of the Polish Academy of Sciences; 1998. p. 309–46.
- Hamilton WJ Jr. The food of the Soricidae. *J Mammal*. 1930;11:26–39.
- Buchalczyk T, Pucek Z. Food storage of the European water shrew, *Neomys fodiens* (Pennant, 1771). *Acta Theriol*. 1963;19:376–9.
- Tomasi TE. Function of venom in the short-tailed shrew *Blarina brevicauda*. *J Mammal*. 1978;59:852–4.
- Lopez-Jurado LF, Mateo JA. Evidence of venom in the Canarian shrew (*Crocodyria canariensis*): immobilizing effects on the Atlantic lizard (*Gallotia atlantica*). *J Zool*. 1996;239:394–5.
- MacArthur RH, Pianka ER. On optimal use of a patchy environment. *Am Nat*. 1966;100:603–9.
- Schoener TW. Theory of feeding strategies. *Ann Rev Ecol Syst*. 1971;2:369–404.
- Marten GG. An optimization equation for predation. *Ecology*. 1973;54:92–101.
- Robinson DE, Brodie ED Jr. Food hoarding behavior in the short-tailed shrew *Blarina brevicauda*. *Am Midl Nat*. 1982;108:369–75.
- Martin IG. Factors affecting food hoarding in the short-tailed shrew *Blarina brevicauda*. *Mammalia*. 1984;48:65–71.
- Rychlik L. Changes in prey size preferences during successive stages of foraging in the Mediterranean water shrew *Neomys anomalus*. *Behaviour*. 1999;136:345–65.
- Rychlik L, Jancewicz E. Prey size, prey nutrition, and food handling by shrews of different body size. *Behav Ecol*. 2002;13:216–23.
- Martin IG. Venom of the short-tailed shrew (*Blarina brevicauda*) as an insect immobilizing agent. *J Mammal*. 1981;62:189–92.
- Fry BG, Roelants K, Champagne DE, Scheib H, Tyndall JDA, King GF, Nevalainen TJ, Norman JA, Lewis RJ, Norton RS, Renjifo C, de la Vega RCR. The toxicogenomic multiverse: convergent recruitment of proteins into animal venoms. *Annu Rev Genomics Hum Genet*. 2009;10:483–511.
- Fry BG, Casewell NR, Wüster W, Vidal N, Young B, Jackson TNW. The structural and functional diversification of the Toxicofera reptile venom system. *Toxicon*. 2012;60:434–48.
- Casewell NR, Wüster W, Vonk FJ, Harrison RA, Fry BG. Complex cocktails: the evolutionary novelty of venoms. *Trends Ecol Evol*. 2013;28:219–29.
- Zhang T, Brown JH. Role of Ca²⁺/calmodulin-dependent protein kinase II in cardiac hypertrophy and heart failure. *Cardiovasc Res*. 2004;63:476–86.
- Turk V, Stoka V, Turk D. Cystatins: biochemical and structural properties, and medical relevance. *Front Biosci*. 2008;1:5406–20.
- Doley R, Zhou X, Kini RM. Snake venom phospholipase A₂ enzymes. In: Mackessy SP, editor. *Handbook of venoms and toxins of reptiles*. New York: CRC Press; 2010. p. 173–98.
- Harris JB, Scott-Davey T. Secreted phospholipases A₂ of snake venoms: effects on the peripheral neuromuscular system with comments on the role of phospholipases A₂ in disorders of the CNS and their uses in industry. *Toxins*. 2013;5:2533–71.
- Sannaningaiha D, Subbaiah GK, Kempaiah K. Pharmacology of spider venom toxins. *Toxin Rev*. 2014;33:206–20.
- Koh DCI, Armugam A, Jeyaseelan K. Snake venom components and their applications in biomedicine. *Cell Mol Life Sci*. 2006;63:3030–41.
- Marsh N, Williams V. Practical applications of snake venom toxins in haemostasis. *Toxicon*. 2005;45:1171–81.
- Rosiński G, Wrzeszcz A, Obuchowicz L. Differences in trehalase activity in the intestine of fed and starved larvae of *Tenebrio molitor* L. *Insect Biochem*. 1979;9:485–8.
- Rosiński G, Gäde G. Hyperglycaemic and myoactive factors in the corpora cardiaca of the mealworm *Tenebrio molitor*. *J Insect Physiol*. 1988;34:1035–42.

47. Marciniak P, Grodecki S, Konopińska D, Rosiński G. Structure-activity relationship for the cardiotropic action of the Led-NPF-I peptide in the beetles *Tenebrio molitor* and *Zophobas atratus*. *J Pept Sci*. 2008;14:329–34.
48. Shatoor AS. Cardio-tonic effect of the aqueous extract of whole plant of *Crataegus aronia* syn: *azarolus* (L) on isolated rabbit's heart. *Afr J Pharm Pharmacol*. 2012;6:1901–9.
49. O'Rourke M, Chen T, Hirst DG, Rao P, Shaw C. The smooth muscle pharmacology of maximakinin, a receptor-selective, bradykinin-related nonadecapeptide from the venom of the Chinese toad, *Bombina maxima*. *Regul Pept*. 2004;121:65–72.
50. Hellyer SD, Selwood AI, Rhodes L, Kerr DS. Marine algal pinnatoxins E and F cause neuromuscular block in an in vitro hemidiaphragm preparation. *Toxicon*. 2011;58:693–9.
51. R Development Core Team. R. A language and environment for statistical computing. Vienna: R Foundation for Statistical Computing; 2015.
52. Bock-Marquette I, Saxena A, White MD, DiMaio JM, Srivastava D. Thymosin β 4 activates integrin-linked kinase and promotes cardiac cell migration, survival and cardiac repair. *Nature*. 2004;432:466–72.
53. Ziegler T, Hinkel R, Stöhr A, Eschenhagen T, Laugwitz KL, le Noble F, David R, Hansen A, Kupatt C. Thymosin β 4 improves differentiation and vascularization of EHTs. *Stem Cells Int*. 2017; Article ID 6848271, 10 pages, <https://doi.org/10.1155/2017/6848271>.
54. Fry BG. From genome to "venome": Molecular origin and evolution of the snake venom proteome inferred from phylogenetic analysis of toxin sequences and related body proteins. *Genome Res*. 2005;15:403–20.
55. Lenting PJ, van Mourik JA, Mertens K. The life cycle of coagulation factor VIII in view of its structure and function. *Blood*. 1998;92:3983–96.
56. van Hoek ML. Antimicrobial Peptides in Reptiles. *Pharmaceuticals*. 2014;7: 723–53.
57. Tanaka AS, Silva MM, Torquato RJS, Noguti MAE, Sampaio CAM, Fritz H, Auerswald EA. Functional phage display of leech-derived trypsin inhibitor (LDTI): construction of a library and selection of thrombin inhibitors. *FEBS Lett*. 1999;458:11–6.
58. Kalapos MP. Methylglyoxal in living organisms: Chemistry, biochemistry, toxicology and biological implications. *Toxicol Lett*. 1999;110:145–75.
59. Emsley J, McEwan PA, Gailani D. Structure and function of factor XI. *Blood*. 2010;115:2569–77.

Submit your next manuscript to BioMed Central and we will help you at every step:

- We accept pre-submission inquiries
- Our selector tool helps you to find the most relevant journal
- We provide round the clock customer support
- Convenient online submission
- Thorough peer review
- Inclusion in PubMed and all major indexing services
- Maximum visibility for your research

Submit your manuscript at
www.biomedcentral.com/submit

